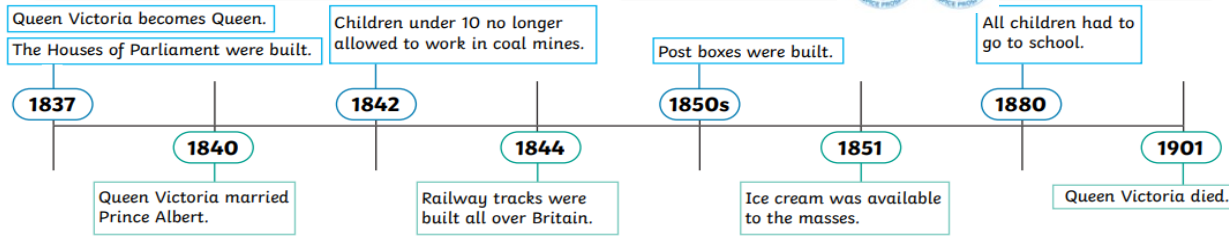
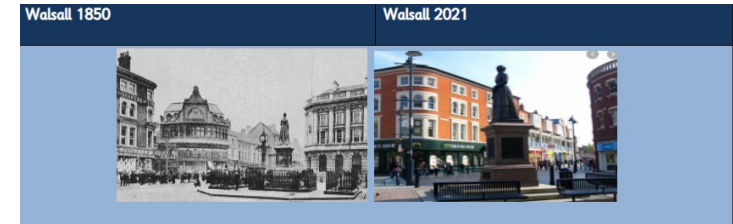


The Blue Coat CE Infant and Junior Schools' Federation



Love God, Love others

Let your light shine.



The Victorian period is named after Queen Victoria who reigned over Britain and a world Empire from her coronation in 1837 until her death in 1901 – 64 years later. Life in Victorian England was very different to today. It was a time of great wealth and poverty, as well as invention and scientific discovery.



Knowledge Organiser for Year 2

How has Walsall changed since Sister Dora's Day?

Learning Objectives

- I can order significant events in Walsall chronologically.
- I can talk about the similarities and differences of the rich and poor living in Walsall.
- I can compare my life as a Walsall child to the life of a Victorian Walsall child.
- I know the impact that Sister Dora had on Walsall.
- I know the impact that the Victorians had on Walsall including inventions, the railways and workhouses.
- I know the impact that Queen Victoria had on Walsall children and their education.

Key changes in Walsall since the 1850s

1865	Sister Dora arrived in Walsall and started working at a Cottage Hospital in Bridge Street.
1882	A stain glass window at St Matthews church was dedicated to sister Dora.
1896	Walsall Manor Hospital was founded.
1908	The first cinema opened in Walsall.
1969	The Old Square shopping centre opened.
1988	The Leather Museum opened
2001	The new bus shelter opened.



Victorian Inventions



telephone



motorcar



typewriter



bicycle



bank holidays and seaside holidays



moving films