

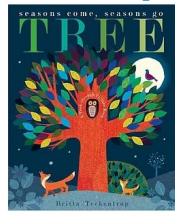
Month	Sept	Oct	Nov	Dec	Jan	Feb	Mar	April	May	June	July	Aug
Hours of sunlight	13	11	9	8	8	10	12	14	15	16	16	14

Seasonal Change (Autumn and Winter)

Word	Meaning
seasons	division of the year based on distinctive weather conditions
adapt	change something to suit different conditions
Migrate	move from one region or country to another
hibernate	sleep over the winter
Thermometer	An item used to measure the temperature
Temperature	How hot or cold it is
Sunshine	How sunny it is
Rainfall	How much rain has fallen (measured by a rain gauge)
Wind direction	Which way the wind is blowing
Wind force	How strong the wind is
Cloud cover	How thick the cloud will be

Useful links: Seasons explained
<https://youtu.be/r4Yi-CWB5Ik>

- ### Learning Outcomes
- identify and name the sources of light.
 - identify and name sources of light that we can see.
 - explain what darkness is.
 - compare sources of light. (brightest, dimmest, darker, lighter)
 - observe and describe shadows during the day.



Knowledge

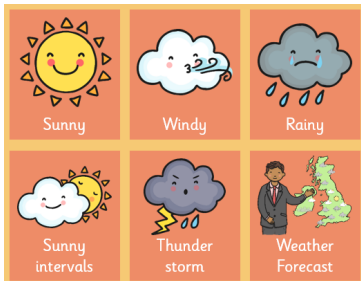
In many parts of the world, the year is made up of four different seasons. These are spring, summer, autumn and winter. Each has its own pattern of weather and varying hours of sunlight.

September, October and November are autumn months. In autumn it is normally wet and windy. Sometimes there are storms. In autumn it is often wet and windy. It is still sunny sometimes, but the temperature is cooler than summer. You need to wear warm, waterproof clothing, like a coat, a jumper and trousers. Sometimes you might need a scarf and an umbrella.

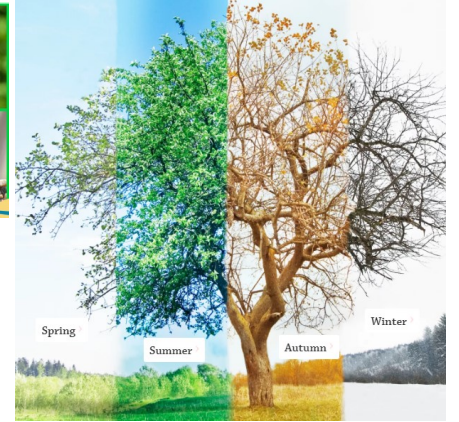
December, January and February are winter months. In winter it is normally cold and wet. Occasionally it snows but most of the time it is cloudy. In winter it is cold most of the time. Sometimes it rains but on cold days it might snow. It is often frosty in the morning.

In the winter you need to have warm clothing, like a hat, coat, scarf and gloves. When it is very cold you might need winter boots.

Animals adapt in lots of ways, some eat different foods and some



FUN FACTS: In places like Arizona and Texas, the seasons don't change much. Some plants stay green all year round and it doesn't usually snow.



Autumn
 September
 October
 November

Winter
 December
 January
 February

Shelfali Oza (born 24 September 1967) is an Indian TV personality and the main **weather presenter** on BBC Birmingham's Midlands Today .

